



# CWB SERIES

## SEMI-GANTRY CRANE

Max. Load 100 000Kg

### CLESCrane

**Address:** Room 902, Building 6, No. 26 Dongqing Street, Zhengzhou, Henan, P.R.China; P.C.: 450000

**Tel:** +86-371-5532 8269

**Email:** [inquiry@clescrane.com](mailto:inquiry@clescrane.com)

**Website:** [www.clescrane.com](http://www.clescrane.com)

Clescrane retains the rights to change on product design and specs. at any time.  
When purchase and delivery, subject to our actual products.

**CLESCrane®**

● [WWW.CLESCrane.COM](http://WWW.CLESCrane.COM)





# ABOUT

With the target of "technology-driven, quality seize the market", Clecrane was established as a systems engineering company in the field of material handling in the year of 2012. Our services cover a wide range of industries, which includes manufacturing industry, processing industry, energy regeneration and so on.

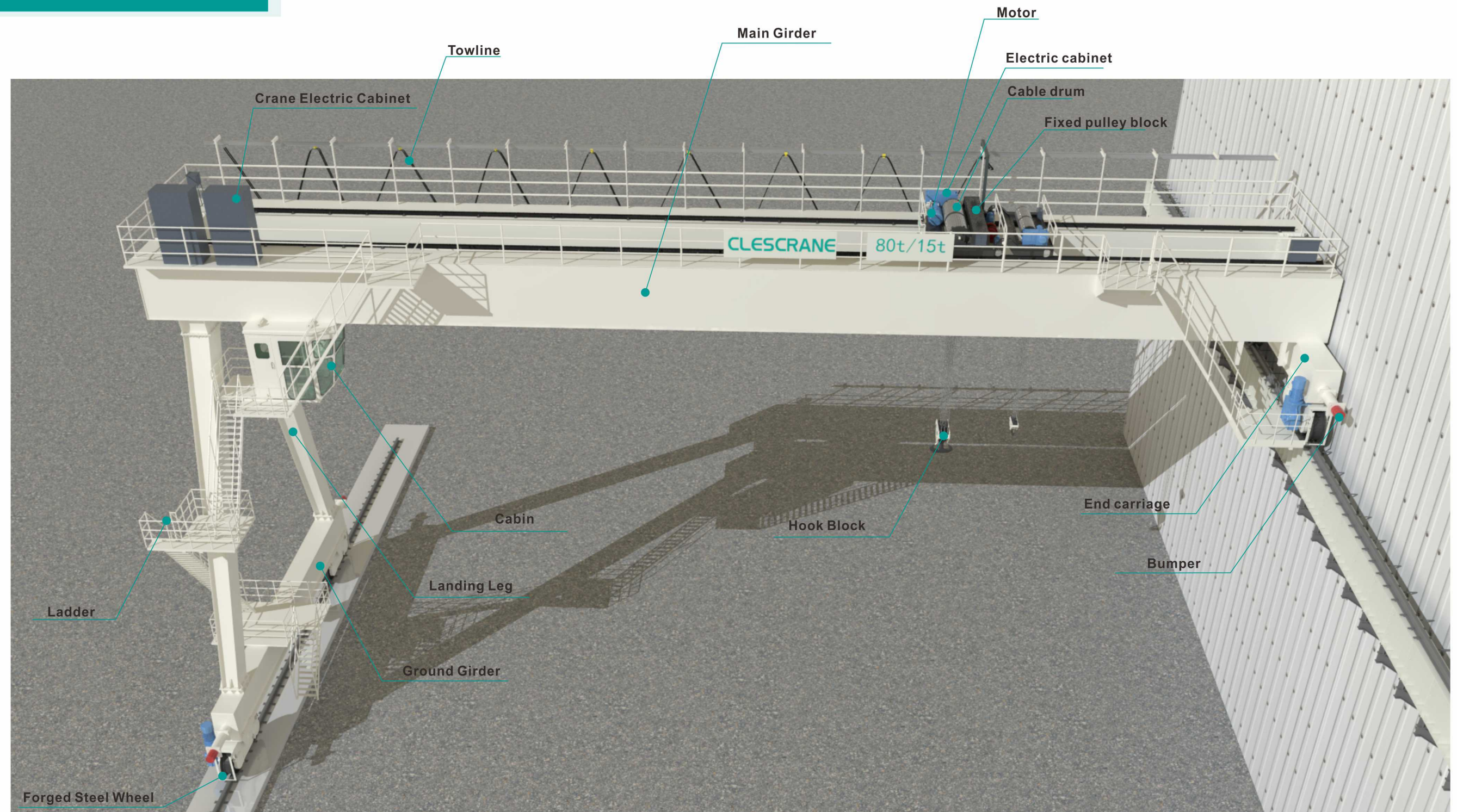
We have been working with the international well-known electrical companies in order to look for cooperation of intelligence hoisting machinery equipment. At the same time, our technical engineers are constantly providing customized designs to meet our customers' needs. Our equipment supervision team ensures the best quality of equipment for our customers. Our professional technical service team will provide zero-distance service to our customers. Clecrane is just on your side to help enhance your business and get sustainable development.

Technology is Clecrane survival principle, quality is the basic foundation of Clecrane survival. Depending on our own technology strength and supervision team, Clecrane has the professional sub-contractor who can provide us the good quality crane parts and control the whole cost in the competitive level. Clecrane intends to create an innovative lifting equipment export service companies and provide customers with the best solution and high-quality manufacturing products. With spirit of "customer first" business philosophy, Clecrane strategic objectives are not for the short-term interests instead of sacrificing the future. CLES people will wholeheartedly provide dedicated service for worldwide customers. When you choose Clecrane, you also increase security and efficiency for your business development at the same time.





# CRANE COMPONENTS





CLESCRANE

>>CWB SERIES SEMI-GANTRY CRANE

# CWB Series Semi-Gantry Crane



**Lifting Capacity:** 5t~100t

**Span:** 5m~25m

**Lifting Height:** ≥6m

**Working Class:** A3, A4, A5, A6



# CWB SERIES SEMI-GANTRY CRANE



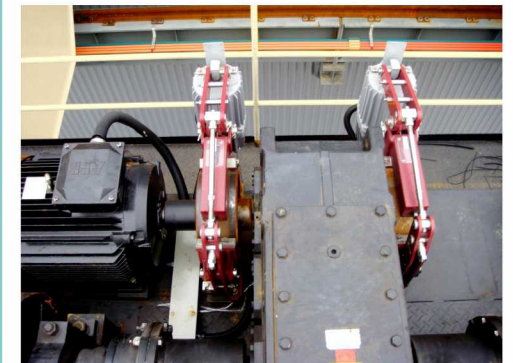
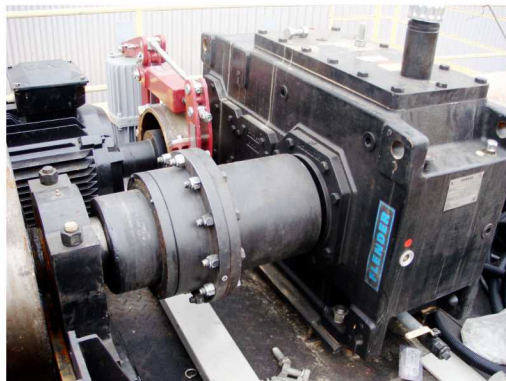
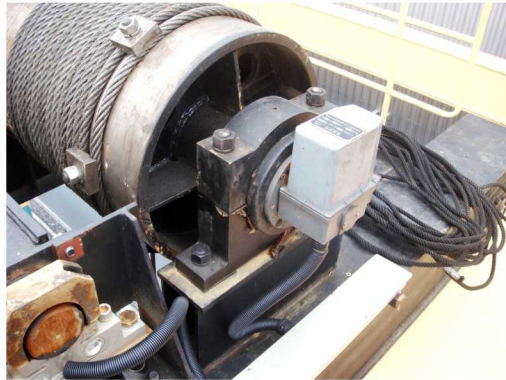
We design semi-gantry cranes to comply with customer's specifications. Often a semi-gantry crane is an economic solution in a workshop or yard.

The advantage of a semi-gantry crane is often, that it can be installed below overhead travelling cranes that already exist. This gives exceptionally extensive cover of the floor area.

The photo shows how a semi-gantry crane is installed underneath some overhead travelling cranes. This allows the work station under the semi-gantry crane to work independently of the overhead travelling cranes.

Our semi-gantry cranes are a cost-effective alternative wherever the installation of bridge cranes is impractical due to a need for a raised runway structure. They are also an ideal supplement to bridge cranes at the workstation level.





# CW SERIES OPEN WINCH TROLLEY

- Small headroom dimension makes good use of available space.
- Compact structure. light dead weight. small wheel pressure. Excellent performance.
- Modular design, easy assembly, inspection and maintenance.
- Stepless traveling speeds enhance safety.
- Smaller runway reduces construction costs.
- A robust, precision-machined trolley frame meets the most stringent quality standards.
- Bogie trolley wheel construction results in less fatigue, less wear and longer life.



# HOISTING MECHANISM



## HOISTING MOTOR

Specially designed for frequent lifting.  
Speed ratio: 6:1.  
Electricity connection persistency rate 60%.  
Protection grade IP55.  
Thermal protection  
Self-cooling fan.  
Capable for long time work with high speed.



## HOISTING GEARBOX

Low speed shaft connects the drum directly for effective transmission.  
All gear under strength heat treating.  
Bath lubrication as to achieve quiet and smooth working.  
Smaller size and dead weight design.



## CROSS TRAVELING DRIVEN UNIT

The cross traveling movement is driven by geared motor brake units.  
Stable and smooth traveling.  
Accurate assembly for end carriage.  
Reduce rail and wheels wear.



## DRUM

Large diameter greatly prolongs service life of steel wire rope.  
Reduce hook limit to left and right.  
Greatly reduce headroom height.  
Welded steel plate for reliable quality.



## WIRE ROPE

FEM compliant ropes.  
Redundant rope reeving.  
Galvanized & anti-rusting.



## TROLLEY CABLE

Special channels protect cables from disorder and prolong service life.  
Clear layout for easy inspection and maintenance.



## INVERTER



Offer soft start and stop for motions as lifting, cross traveling and long traveling.  
Stepless speed control for various applications.



## CROSS LIMIT SWITCH

To position the direction of cross and long travelings of the crane and realize speed reducing and position controlling. Safe, reliable and easy to install and adjust.



## OVERLOAD LIMIT

A protection device as our standard configuration, to ensure safe operation.

CLESCRANE



# HOISTING MECHANISM



## BRAKES

Large torque of heavy duty hydraulic brake offers high safety.  
Insure valid brake when electrical outage.



## HOOK BLOCK

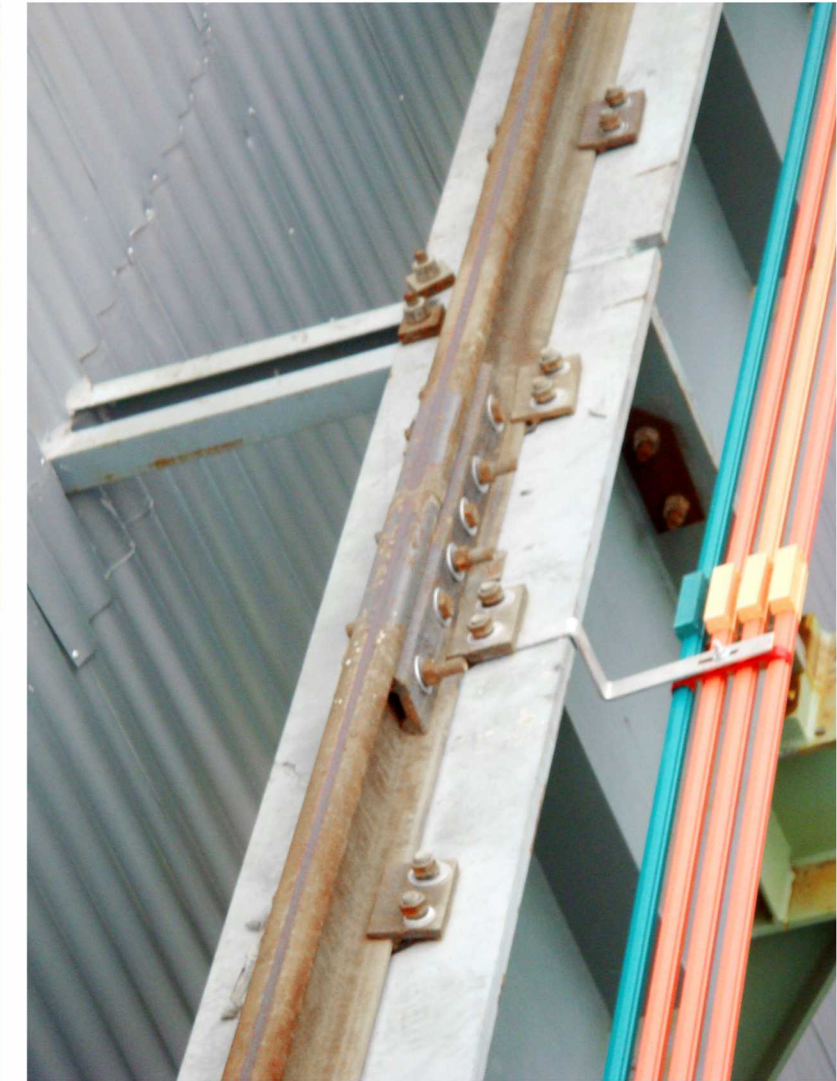
Sister-hook for heavy lifting use;  
Rotary 360 degree for flexible handling.  
Spring latch for safe operation;  
Forged alloy.

## ROPE GUIDE

The rugged rope guide ensures proper rope winding on the drum;  
Cast iron steel dust proof rope guide.  
Easy maintenance & long service life.



# THREE-IN-ONE OPERATION STRUCTURE OF THE CRANE



# RAIL AND SLIDE WIRE

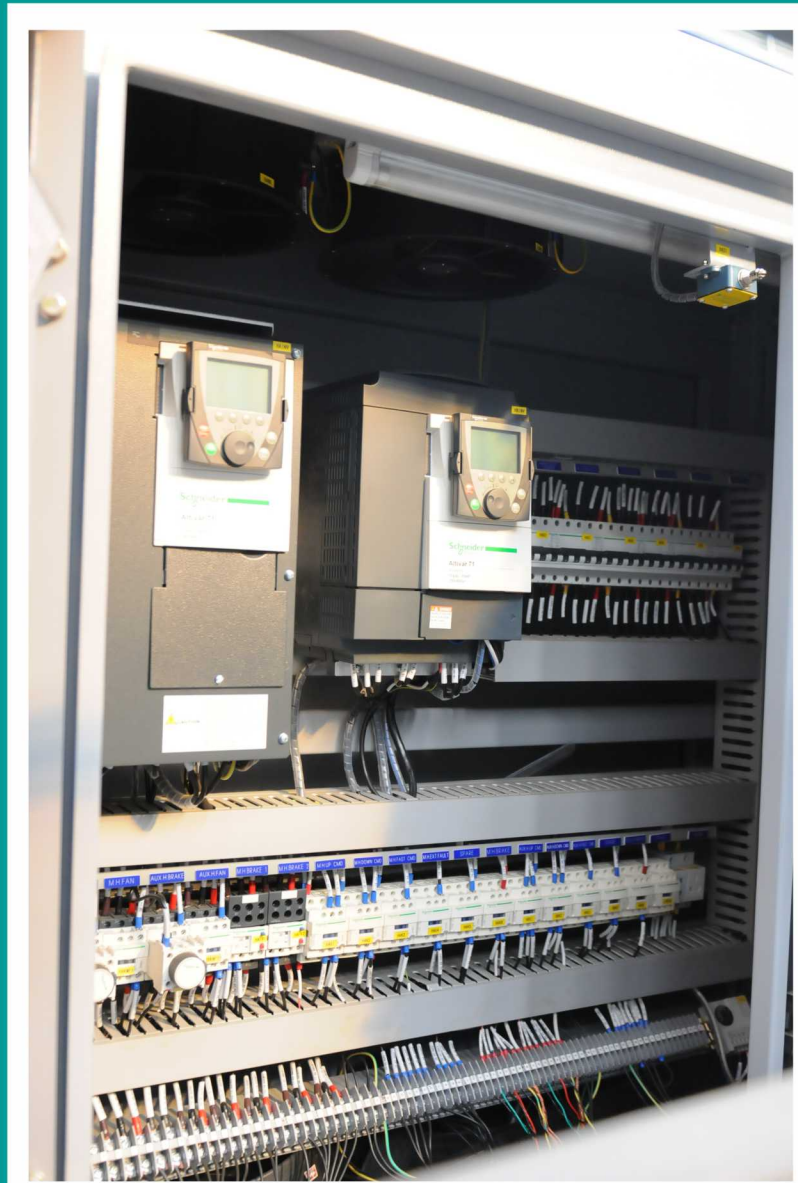


# GROUND BEAM AND WHEEL BLOCK





# ELECTRICAL CONTROL SYSTEM



- Characteristics regarding impact/vibrations, wear and safety were examined.
- Accommodated in robust steel plate control cubicles, on the crane girder.
- All movements can be switched off by actuating the emergency-off switch at the control station via a main contactor.
- Long and cross travel limited by means of preliminary and final limit switches.
- Signal bell are assembled for warning.

## OPTION

### REMOTE CONTROL

Easy to control, unnecessary to add professional driver , more free space for operator on the ground.

Tens of thousands of frequency points, non-interference with each other.

Two steps push button or joystick station with emergency stop.

Protection class IP65.

Lifespan: 500,000 times.



### CABIN CONTROL

Linkage control, conjoined with driving chair, easy to operate.

Professional driving chairs, adjustable and fully turning.

Round window with large arc glass, wide view.

Two steps push button or joystick station with emergency stop.



### CABLE

**Cable Properties:** Sheath: special polychloreprene (Butadiene-acrylonitrile rubber), it remains flexible at -15°C, flame resistance and self-extinguishing.

Thin structure with a minimum bending radius of 10cm, suitable for quick rewinding device, oil resistant and cold resistant, the power cord and communication line can be added in the core (and can also produce the circular structure).

**Specification&model:** YFFB 0.75~95 mm<sup>2</sup>



# SERVICE

Our service solutions are specially made based on different requirements of individual clients.

Meeting their standards could remove any of their worries.

Including:

- Customized solutions
- Reliable, efficient and safe crane equipment
- High quality packaging
- Installation and assembly & test running
- Professional training
- Plenty of spare parts
- Maintenance
- Analysis and suggestions
- Intelligent crane design software
- The experienced team of engineers

Clescrane's service pack is safe and costs less.

Clescrane's service pack also applies to cranes and hoists produced by other manufacturers.



# OPTIONS

## Safety

Sophisticated load handling methods reduces the risk of collisions and accidents.

## Productivity

Time savings in load handling and final positioning makes processes more efficient.

## Cost savings

Longer lifetime of components and less maintenance work results in better economy.



Extended Speed Range



Micro Speed



Slack Rope



Tandem



Inching



Restricted Load



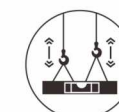
Sway Control



Load Floating



Shock Load



Synchronisation



Cranes in Tandem

**Advanced Product Solution Constant Innovation  
Based on the Demand of Customers**