



CHX SERIES

SINGLE GIRDER SUSPENSION CRANE

Max. Load 10 000Kg

CLESCRANE

Address: Room 902, Building 6, No. 26 Dongqing Street, Zhengzhou, Henan, P.R.China; P.C.: 450000

Tel: +86-371-5532 8269

Email: inquiry@clescrane.com

Website: www.clescrane.com

Clescrane retains the rights to change on product design and specs. at any time.
When purchase and delivery, subject to our actual products.

CLESCRANE®

● WWW.CLESCRANE.COM

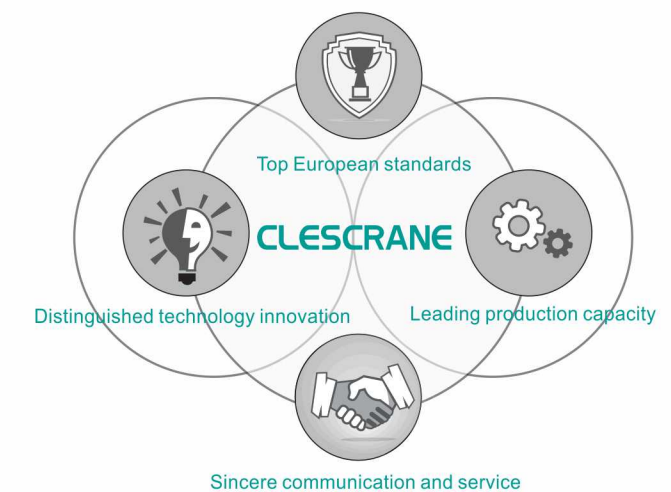


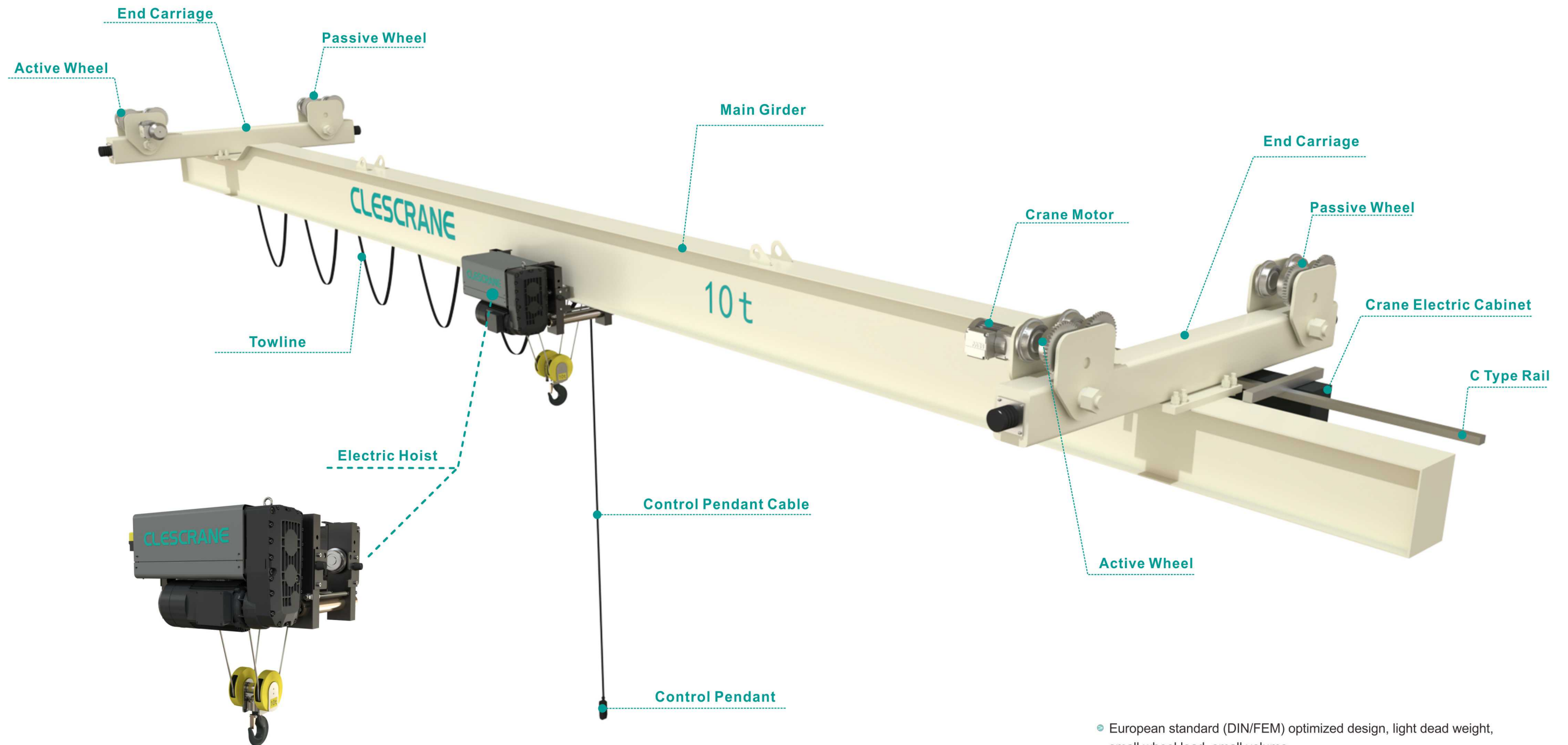
ABOUT

With the target of "technology-driven, quality seize the market", Clescrane was established as a systems engineering company in the field of material handling in the year of 2012. Our services cover a wide range of industries, which includes manufacturing industry, processing industry, energy regeneration and so on.

We have been working with the international well-known Electrical companies in order to look for cooperation of intelligence hoisting machinery equipment. At the same time, our technical engineers are constantly providing customized designs for our customers' needs. Our equipment supervision team ensures the best quality of equipment for our customers. Our professional technical service team will provide zero-distance service to our customers. Clescrane is just on your side to help enhance your business and get sustainable development.

Technology is Clescrane survival principle, quality is the basic foundation of Clescrane survival. Depended on our own technology strength and supervision team, Clescrane has the professional sub-contractor who can provide us the good quality crane parts and control the whole cost in the competitive level. Clescrane intended to create an innovative lifting equipment export service companies and provide customers with the best solution and high-quality manufacturing products. With spirit of "customer first" business philosophy, Clescrane strategic objectives are not for the short-term interests instead of sacrifice the future. CLES people will wholeheartedly provide dedicated service for worldwide customers. When you choose Clescrane, you also increase security and efficiency for your business development at the same time.





CRANE COMPONENTS

- European standard (DIN/FEM) optimized design, light dead weight, small wheel load, small volume.
- Max. lifting capacity: 10t.
- Flexible solution for all lifting needs.
- Excellent driving properties, stepless control, smooth moving.

CHX

Series Single Girder Suspension Crane

Lifting Capacity: 0.5~10t

Span: 3m~16m

Lifting Height: 6m, 9m, 12m, 15m, 18m

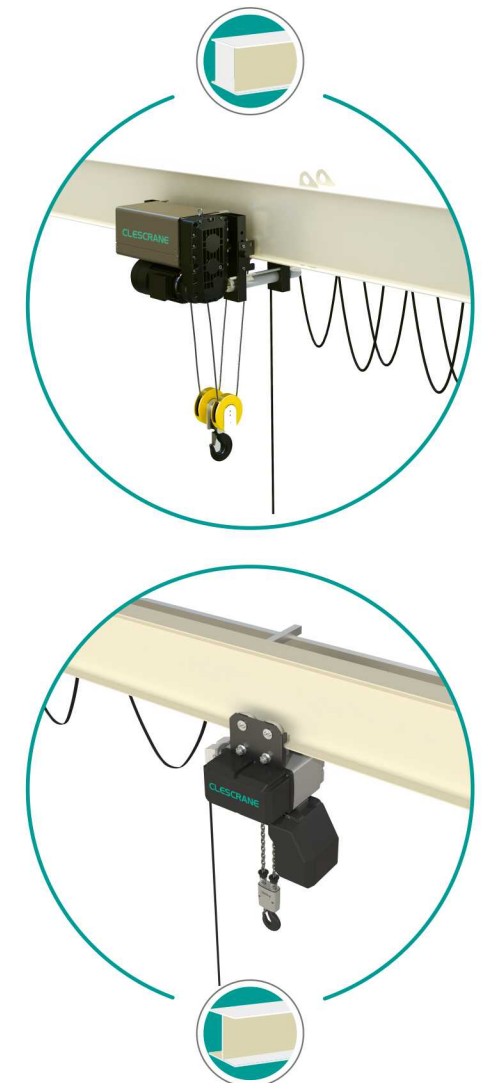
Working Class: A5, A6



Advantages

- Leading technology and reliable functioning.
- Compact structure and modular design for optimized customer investment.
- Environmentally sustainable design for saving space and energy.
- Safe, reliable, and easy-to-maintain.
- More configurations and options to suit your needs.

Our single girder suspension crane can be directly mounted on the existing roof structure that does not provide corbels for support. This installation manner saves space and helps users cut down cost that they would have otherwise spent on building corbels to mount the crane, so that large operating space remains open. The crane plays a key role in material handling process.



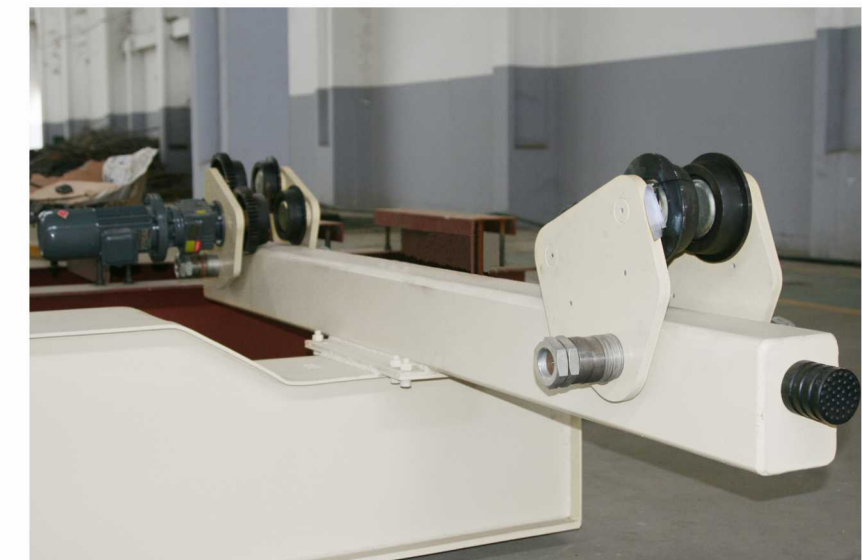
MAIN GIRDER



With
CH Series
Wire Rope
Hoist



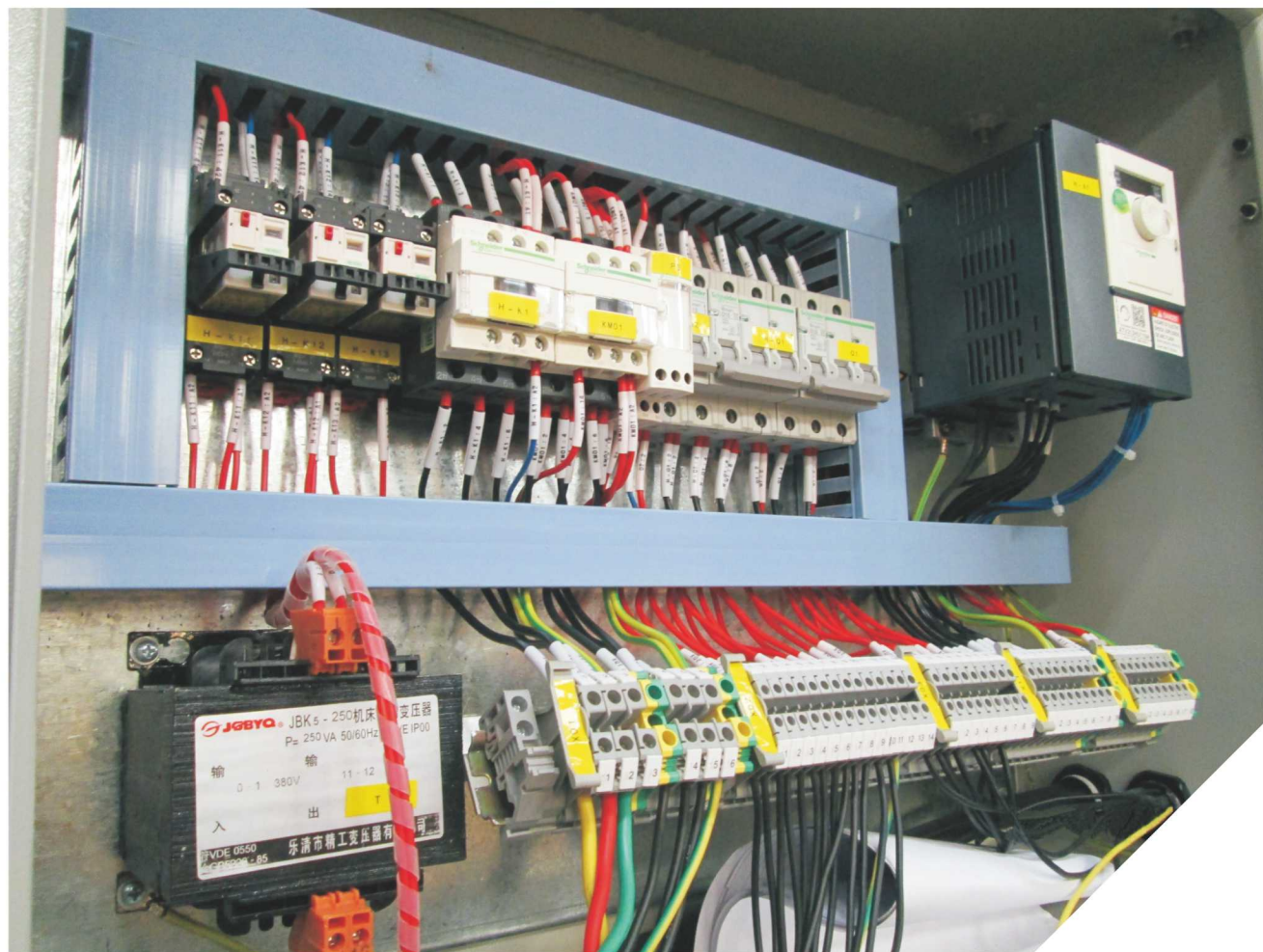
With
CCH Series
Electric Chain
Hoist



END CARRIAGES



CRANE ELECTRICAL CONTROL



Pendant

Easy to control, unnecessary to add professional driver
Double block button to achieve safety stop
Following type or independent sliding type suspended under hoist
Protection class Ip65

Lifespan

500,000 times

Remote Control

Easy to control, unnecessary to add professional driver , more free space for operator on the ground
Tens of Thousands of frequency points, non-interference with each other
Two steps push button or joystick station with emergency stop
Lifespan: 500,000 times

Protection class **IP65**



OPTION

HSMX

1. HFP Series engineering plastic ducted type HSMX

The shell of HFP series engineering plastic ducted-type HSMX shell is extruded by specific engineering plastics, which has the characteristics of safety and energy saving, acid and alkali corrosion and flame retardant.



Specifications

No.	Specifications&model	Conduction area	Current	Remarks
1	HFP-4-10/50 HFPE-4-10/50	10 ²	50A	Standard size of 4m can be made into 3 pole or 5 poles match with current collector HFP-4-40/HFP-4-60/HFP-4-150, double carbon brush collector as an option.
2	HFP-4-15/80 HFPE-4-15/80	15 ²	80A	
3	HFP-4-25/100 HFPE-4-25/100	25 ²	100A	
4	HFP-4-35/130 HFPE-4-35/130	35 ²	130A	
5	HFP-4-50/180 HFPE-4-50/180	50 ²	180A	
6	HFP-4-70/210 HFPE-4-70/210	70 ²	210A	
Remarks: a.The above specification can be made of various curved ducts with a radius greater than 1M b.HFPF is a dustproof sliding contact line.				

2. JDC-H type, single pole combined sliding contact line

JDC - H single-polar combined type HSMX is made from rare earth alloy, large amount of river closure and small voltage. Using the stainless steel strip with good wear resistance in the aluminum guide rail and brush friction parts, to ensure that the mobile guide and valid service life.



Specifications

No.	Model	Specifications	No.	Model	Specifications	Remarks
1	JDC-H-150A	90m ²	6	JDC-H-150A	90m ²	Standard size of 6m can be made into 3 poles and any poles.
2	JDC-H-250A	145m ²	7	JDC-H-250A	145m ²	
3	JDC-H-320A	180m ²	8	JDC-H-320A	180m ²	
4	JDC-H-500A	300m ²	9	JDC-H-500A	300m ²	
5	JDC-H-800A	450m ²		JDC-H-800A	450m ²	

3. Seamless type HSMX

Material: non-oxygen copper, contains copper 99.95% above.
More than 100% conductivity.



Specifications:

3 poles seamless HSMX		
Model	Specifications	Weight(KG)
HFE302-10mm ²	10mm ²	0.72/m
HFE302-15mm ²	15mm ²	0.82/m
HFE302-25mm ²	25mm ²	1.07/m

4 poles seamless HSMX		
Model	Specifications	Weight(KG)
HFE402-10mm ²	10mm ²	0.88/m
HFE402-15mm ²	15mm ²	1.00/m
HFE402-25mm ²	25mm ²	1.38/m

4. JGH high temperature rigid body sliding contact line

JGH type high temperature rigid body sliding contact line is made up of trapezoidal type copper wire and steel tank bracket in a certain length of split phase group, with high strength special insulating pillar, forming of various sliding contact line indoor and outdoor, it can meet the bad environment requirment of high voltage & abnormal high temperature condition.

CABLE

Cable Properties:

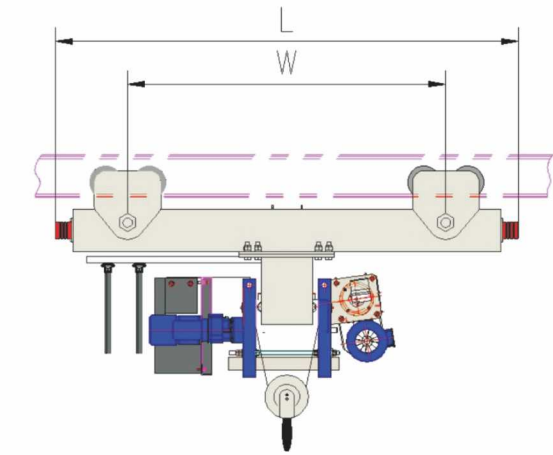
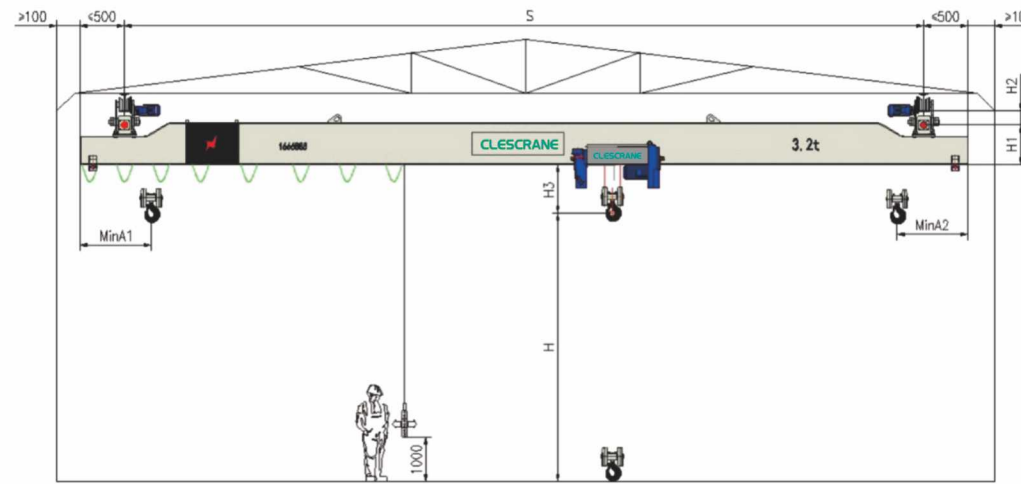
Sheath: special polychloreprene (Butadiene-acrylonitrile rubber), it remains flexible at -15℃, flame resistance and self-extinguishing.

Thin structure with a minimum bending radius of 10cm, suitable for quick rewinding device, oil resistant and cold resistant, the power cord and communication line can be added in the core (and can also produce the circular structure).

Specification&model: YFFB 0.75~95 mm²



Parameters of CHX Series Single Girder Suspension Crane



Lifting capacity (t)	Span S(m)	Lifting height H(m)	Traveling speed (m/min)	Lifting speed (m/min)	Electric control code	Travelling group FEM/ISO	Hoist working class FEM/ISO	Wheel base W(mm)	H3(mm)	Left limit size A1(mm)	Right limit size A2(mm)	H1	H2	Crane width L(mm)	Max. wheel load (kN)	Total power (KW)	Dead weight (kg)
2	3	9	3.2~32	0.8/5.0	CHX02E	2m/A5	2m/M5	1600	536	668	932	285	140	2276	13.6	4.1	1097
	5							1600	536	668	932	335	140	2276	14.0	4.1	1255
	7							1600	536	668	932	387	140	2276	14.4	4.1	1415
	9							1600	536	668	932	437	140	2276	15.5	4.1	1863
	11							1600	536	668	932	437	140	2276	16.0	4.1	2075
	13							2100	536	668	932	487	140	2776	17.9	4.5	2828
	15							2100	536	668	932	487	140	2776	18.6	4.5	3111
	16							2100	536	668	932	537	140	2776	19.8	4.5	3611
3.2	3	9	3.2~32	0.8/5.0	CHX03E	2m/A5	2m/M5	1600	536	668	932	467	150	2376	19.9	4.5	1245
	5							1600	536	668	932	467	150	2376	20.3	4.5	1409
	7							1600	536	668	932	467	150	2376	20.8	4.5	1576
	9							1600	536	668	932	517	150	2376	21.5	4.5	1884
	11							1600	536	668	932	567	150	2376	22.1	4.5	2130
	13							2100	536	668	932	667	150	2876	23.0	4.5	2489
	15							2100	536	668	932	567	150	2876	24.0	4.5	2874
	16							2100	536	668	932	567	150	2876	24.7	4.5	3164
5	3	9	3.2~32	0.8/5.0	CHX05E	2m/A5	2m/M5	1600	580	668	932	519	150	2376	29.3	7.4	1351
	5							1600	580	668	932	519	150	2376	29.8	7.4	1525
	7							1600	580	668	932	519	150	2376	30.4	7.4	1778
	9							1600	580	668	932	619	150	2376	31.1	7.4	2072
	11							1600	580	668	932	669	150	2376	31.8	7.4	2338
	13							2100	580	668	932	569	150	2876	33.2	7.4	2912
	15							2100	580	668	932	619	150	2876	34.3	7.4	3343
	16							2100	580	668	932	619	150	2876	34.7	7.4	3486
10	3	9	3.2~32	0.8/5.0	CHX10E	2m/A5	2m/M5	1600	740	696	888	633	150	2376	56.4	12.1	1868
	5							1600	740	696	888	633	150	2376	57.1	12.1	2127
	7							1600	740	696	888	633	150	2376	58.0	12.1	2500
	9							1600	740	696	888	733	150	2376	59.1	12.1	2929
	11							1600	740	696	888	683	150	2376	60.3	12.1	3408
	13							2100	740	696	888	733	150	2876	61.6	12.1	3923
	15							2100	740	696	888	783	150	2876	63.3	12.1	4598
	16							2100	740	696	888	783	150	2876	64.0	12.1	4877

SERVICE

Our service solutions are specially made based on different requirements of individual clients.

Meeting their standards could remove any of their worries.

Including:

- Customized solutions
- Reliable, efficient and safe crane equipment
- High quality packaging
- Installation and assembly & test running
- Professional training
- Plenty of spare parts
- Maintenance
- Analysis and suggestions
- Intelligent crane design software
- The experienced team of engineers

Clescrane's service pack is safe and costs less.

Clescrane's service pack also applies to cranes and hoists produced by other manufacturers.



OPTIONS

Safety

Sophisticated load handling methods reduces the risk of collisions and accidents.

Productivity

Time savings in load handling and final positioning makes processes more efficient.

Cost savings

Longer lifetime of components and less maintenance work results in better economy.



Extended Speed Range



Micro Speed



Slack Rope



Tandem



Inching



Restricted Load



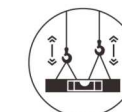
Sway Control



Load Floating



Shock Load



Synchronisation



Cranes in Tandem

**Advanced Product Solution Constant Innovation
Based on the Demand of Customers**